

# 3-D SHREK

## ASSEMBLY INSTRUCTIONS

Time to complete: Approximately 1 hour

Level: Medium/Difficult



### GETTING STARTED

#### Materials

- Metal-edged ruler
- Butter knife
- Scissors or craft knife
- Cutting mat (optional)
- Multipurpose glue
- 2 brads



- 1** Score all the pieces: Using a ruler as a guide, run the back side of a butter knife firmly along all dashed and dotted lines.



- 2** Using scissors or a craft knife and cutting mat, cut out all pieces along solid lines. Don't forget to cut slits on left arm, legs, and head.



- 3** Fold all pieces along score lines, using the folding key below as a reference.

Mountain Fold

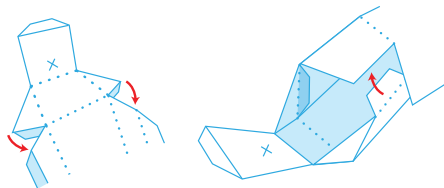


Valley Fold

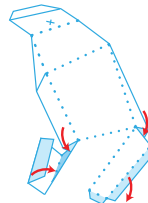


### ASSEMBLE YOUR SHREK

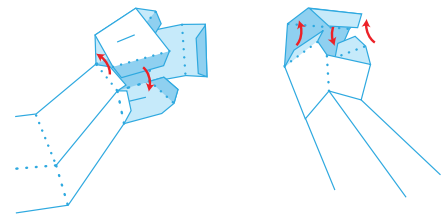
- 4 Arms:** Glue A tabs on left arm in place.



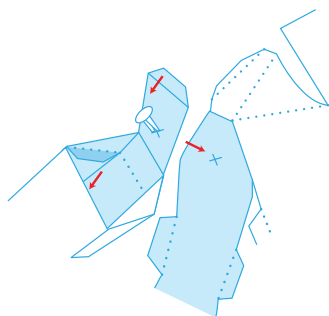
- 5** Glue B tabs in place, then C tabs.



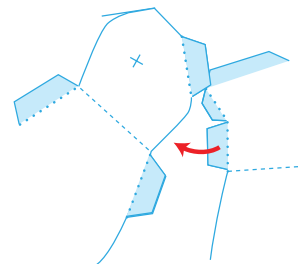
- 6** Wrap hand panel around, gluing D tabs in place. Glue E tabs in place. Repeat with right arm.



- 7** Insert brad through X (from non-printed side) on left arm. Next, insert ends of brad through X (from printed side) on left side of body. Bend each end of brad upward to secure. Tuck F tab inside of arm to close. Repeat with right arm.

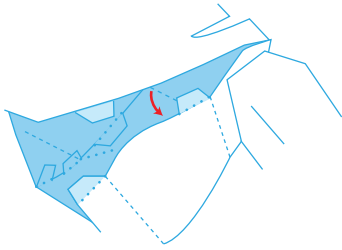


- 8 Body:** To attach front body and back body on right side, glue G tabs in place. Then, starting at the top and working your way down, glue H tabs in place.

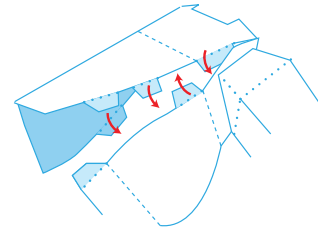


## ASSEMBLY INSTRUCTIONS CONTINUED

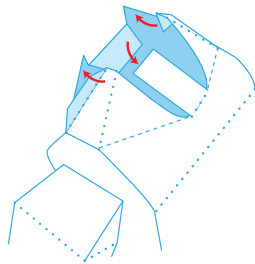
- 9** Glue J tabs in place to secure left side of front body.



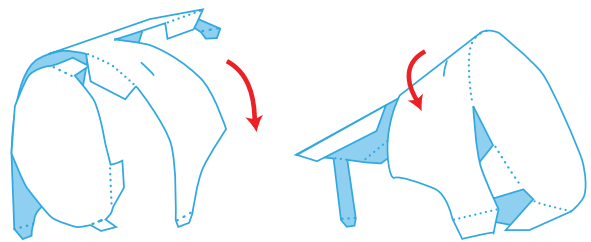
- 10** Fold down back body and glue R tabs on right side of body in place. Repeat on left side of body.



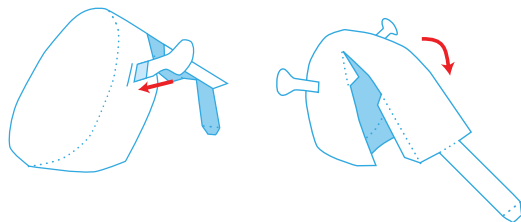
- 11** Glue L tabs to top of back body. Fold neck panel on front of body backwards and glue to M tab.



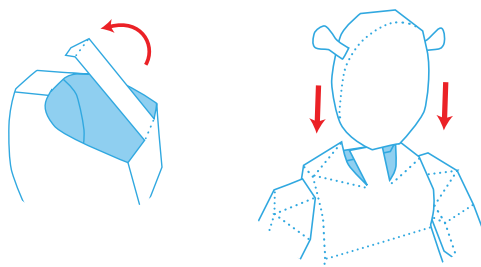
- 12** **Head:** Fold top head panel down and wrap around sides of face, gluing N tabs in place. Glue O tabs in place to close bottom of head.



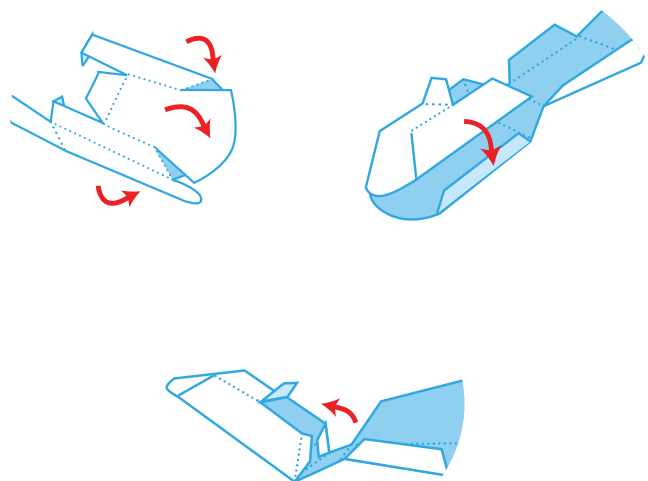
- 13** Fold ear piece in half and glue together. Cut out ears along solid brown lines. Insert ears into slits on each side of head. Fold back head panel down and glue P tabs in place.



Glue tab Q to inside of opposite edge at front of head. Glue bottom of head to top of body.

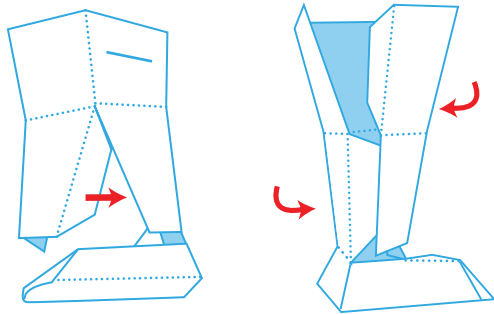


- 14** **Legs:** Curve R tabs on foot inward and glue behind neighboring edges. Fold top of foot over and glue to tab S. Fold leg panel upward and glue T tabs in place.

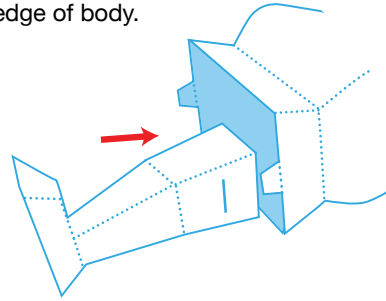


## ASSEMBLY INSTRUCTIONS CONTINUED

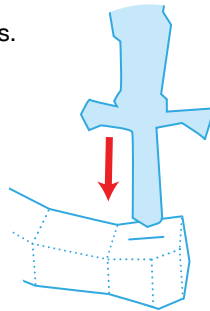
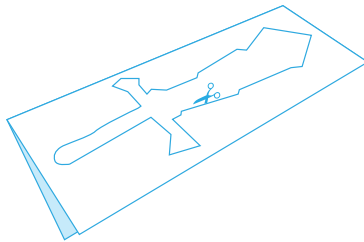
- 15 Glue tab U behind neighboring edge. Wrap leg panel around, and starting at foot, glue V tabs in place.



- 16 Insert Z tabs at bottom of body into slits on each leg. Glue outer top portion of each leg to inside edge of body.

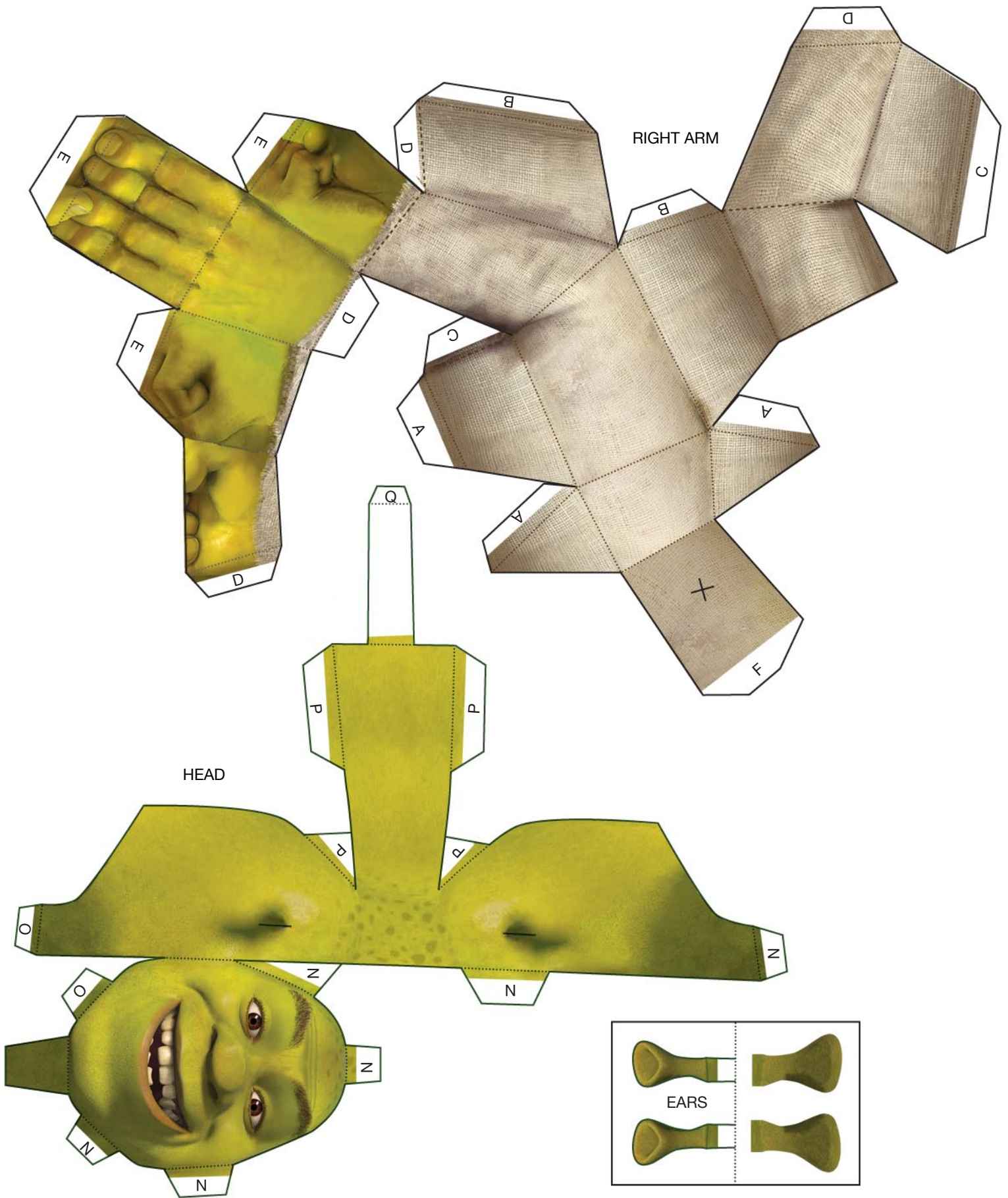


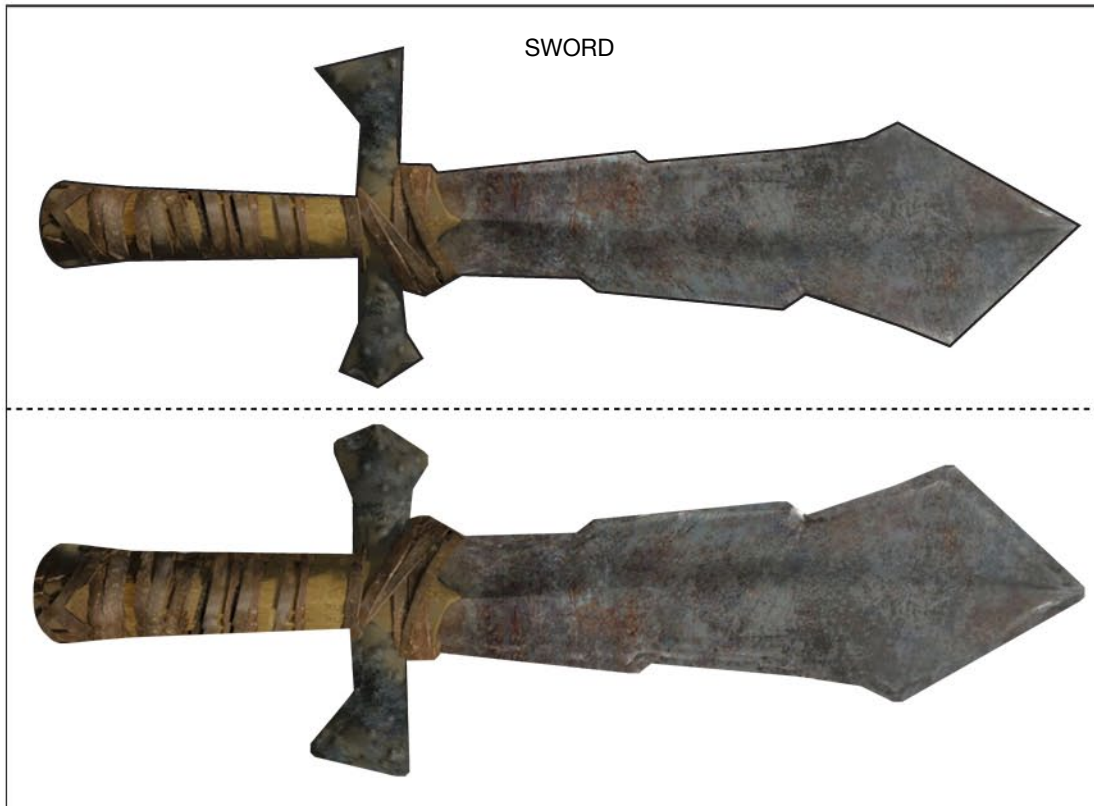
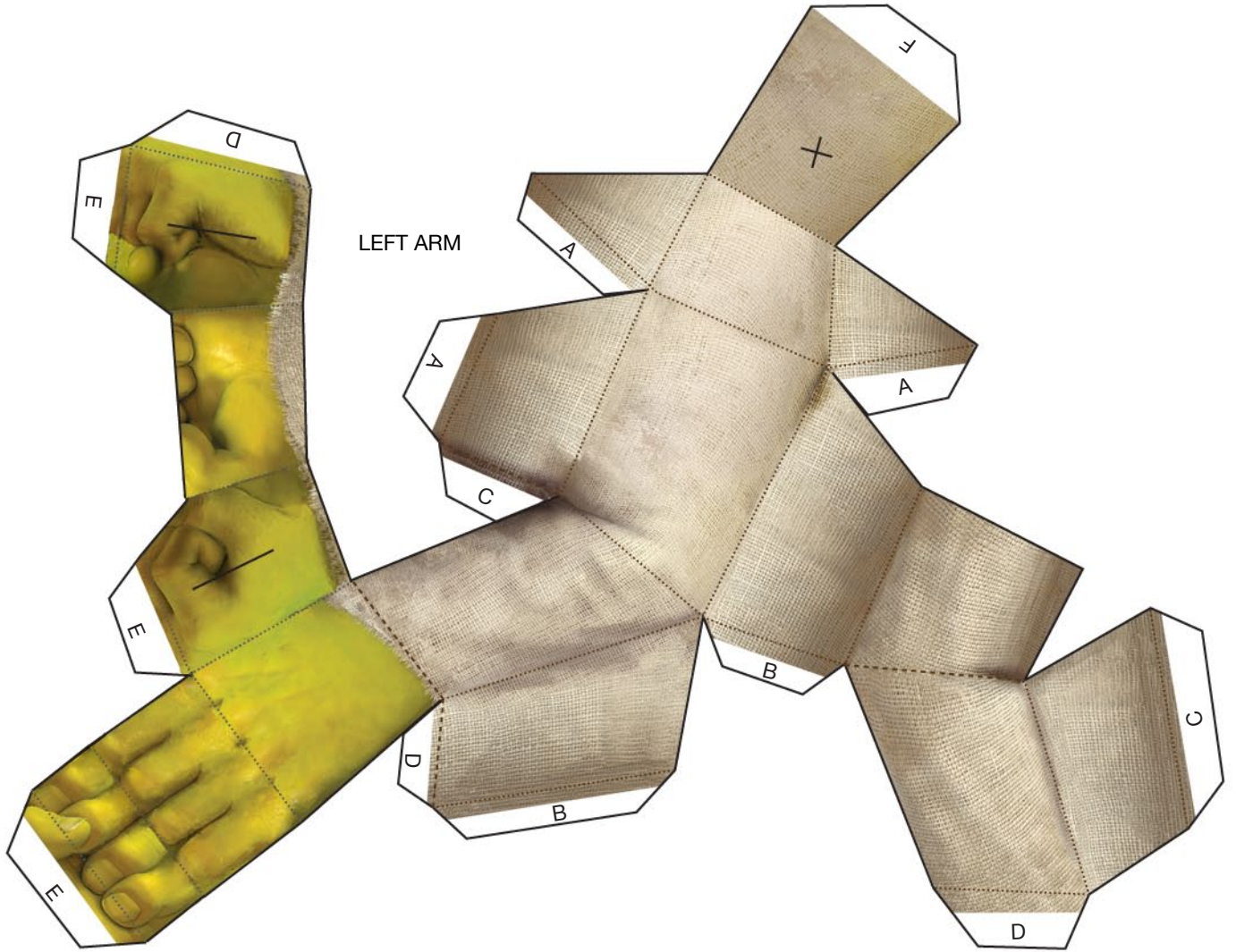
- 17 **Sword:** Fold sword piece in half and glue together. Cut out sword along solid brown lines. Insert sword handle through slits in left hand.

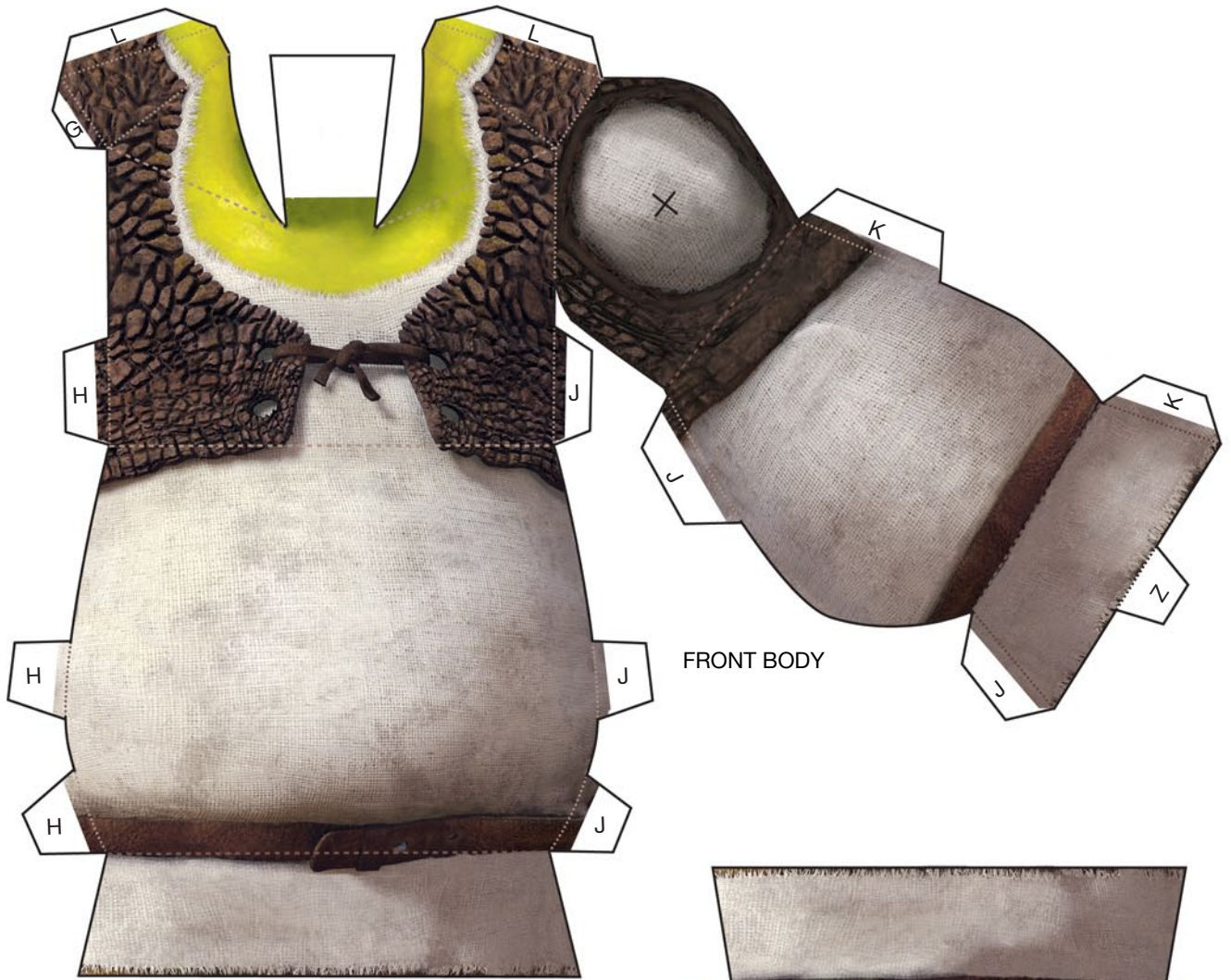


- 18 You're done!

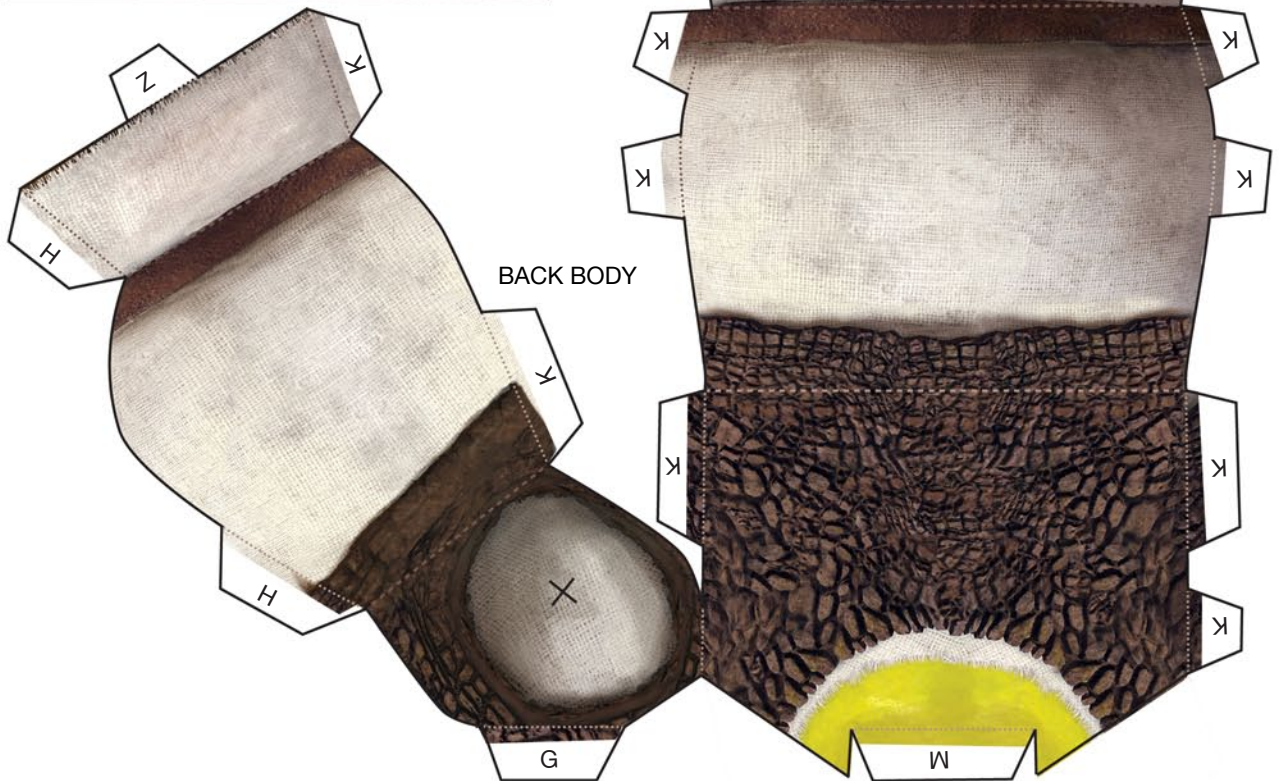








FRONT BODY



BACK BODY

